

\$430,000 - 241079 Highway 842, Rural Wheatland County

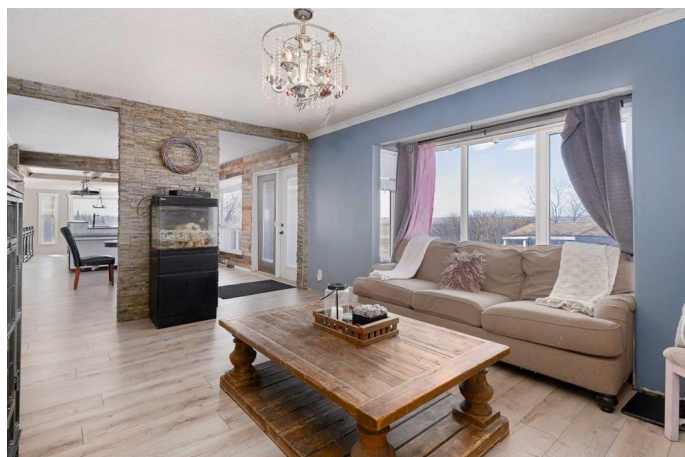
MLS® #A2232751

\$430,000

3 Bedroom, 1.00 Bathroom, 1,633 sqft
Residential on 2.32 Acres

NONE, Rural Wheatland County, Alberta

JUST 20 MINUTES FROM STRATHMORE.
50 minutes to Calgary city limits! Welcome to this 1633 sqft bungalow on 2.32 acres, with an additional 1062 sqft below grade. As you walk in, you will notice an abundance of natural light throughout the main floor and an open floor plan that spans end to end. There are two dining areas, separated by an expansive kitchen that provides two sinks, plenty of cupboard and counter space, and a huge walk-in pantry. This kitchen is a true delight for cooking and entertaining guests! The living room is warm and inviting, with plenty of natural light coming from the west. The large rear entryway has the coveted main floor laundry and leads down to the partially finished basement. The full bathroom has been recently renovated, just off to the huge primary bedroom. A second bedroom completes this bright, spacious main floor. Newer metal roof, soffits, eaves, and siding. Recent upgrades also include laminate flooring and remodeled bathroom. New 100A electrical panel, good septic system and excellent water well. New stove coming soon. This spacious bungalow, on concrete foundation, has paved road access with breathtaking prairie views from inside the home. Outside is a fenced dog run, a treed area in front that would be perfect for a garden, and a private backyard that would be great for summer night fires. Only 7 minutes away is the K-12 Wheatland Crossing



School with bus route available, 8 minutes from Hussar, and about 13 minutes from Standard. It is not often an acreage at this price becomes available this close to Strathmore and Calgary.

Built in 1974

Essential Information

MLS® #	A2232751
Price	\$430,000
Bedrooms	3
Bathrooms	1.00
Full Baths	1
Square Footage	1,633
Acres	2.32
Year Built	1974
Type	Residential
Sub-Type	Detached
Style	Acreage with Residence, Bungalow
Status	Active

Community Information

Address	241079 Highway 842
Subdivision	NONE
City	Rural Wheatland County
County	Wheatland County
Province	Alberta
Postal Code	t0j3g0

Amenities

Parking	Parking Pad, RV Access/Parking
---------	--------------------------------

Interior

Interior Features	Bookcases, Breakfast Bar, Central Vacuum, Kitchen Island, Open Floorplan, Pantry, Storage
Appliances	Dishwasher, Dryer, Electric Stove, Refrigerator, Washer, Window Coverings
Heating	Central, Natural Gas

Cooling	None
Has Basement	Yes
Basement	Full, Partially Finished

Exterior

Exterior Features	Dog Run, Garden, Private Yard
Lot Description	Back Yard, Dog Run Fenced In, Few Trees, Front Yard, Garden, Level, Private, Views, Gazebo
Roof	Metal
Construction	Vinyl Siding, Wood Frame
Foundation	Poured Concrete

Additional Information

Date Listed	June 19th, 2025
Days on Market	109
Zoning	CH

Listing Details

Listing Office	eXp Realty
----------------	------------

Data is supplied by Pillar 9â„¢ MLS® System. Pillar 9â„¢ is the owner of the copyright in its MLS® System. Data is deemed reliable but is not guaranteed accurate by Pillar 9â„¢. The trademarks MLS®, Multiple Listing Service® and the associated logos are owned by The Canadian Real Estate Association (CREA) and identify the quality of services provided by real estate professionals who are members of CREA. Used under license.