

# \$774,900 - 230 Palisbriar Park Sw, Calgary

MLS® #A2230459

**\$774,900**

3 Bedroom, 3.00 Bathroom, 1,391 sqft

Residential on 0.00 Acres

Palliser, Calgary, Alberta

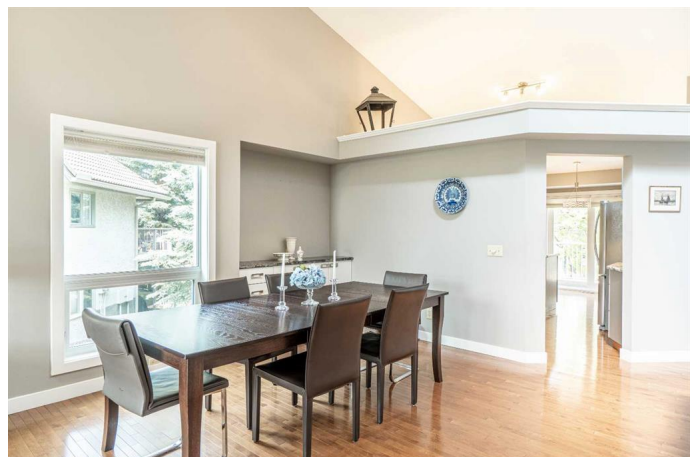
**\*\* Please click on "Videos" for 3D tour \*\***

Welcome to a renovated, very well cared for WALKOUT +50 villa in very desirable Palisbriar Park! Very seldom do these units come up for sale! Amazing features include: 1+2 bedrooms, over 2700 sq ft total developed space, insulated/drywalled double attached garage, wood burning fireplace on main floor, gas fireplace in basement, towering 23 ft vaulted ceilings, main floor laundry, good sized deck with BBQ gas line, stunning basement wet bar, large dining space with built-in butler counter, no neighbours behind, upgraded window coverings, main floor den, real hardwood floors and much more! Location is outstanding - tucked in very desirable Palliser, close to all amenities, walking paths 1 block away and very easy access to all major routes! Complex is fabulous - great neighbours, very well run and healthy reserve fund. Condo fee covers - grass cutting, snow shoveling, most exterior maintenance and professional management. Clean and ready for new owners - Immediate possession!

Built in 1989

## Essential Information

|           |           |
|-----------|-----------|
| MLS® #    | A2230459  |
| Price     | \$774,900 |
| Bedrooms  | 3         |
| Bathrooms | 3.00      |



|                |                        |
|----------------|------------------------|
| Full Baths     | 2                      |
| Half Baths     | 1                      |
| Square Footage | 1,391                  |
| Acres          | 0.00                   |
| Year Built     | 1989                   |
| Type           | Residential            |
| Sub-Type       | Semi Detached          |
| Style          | Side by Side, Bungalow |
| Status         | Active                 |

### Community Information

|             |                        |
|-------------|------------------------|
| Address     | 230 Palisbriar Park Sw |
| Subdivision | Palliser               |
| City        | Calgary                |
| County      | Calgary                |
| Province    | Alberta                |
| Postal Code | T2V 5H6                |

### Amenities

|                |                                   |
|----------------|-----------------------------------|
| Amenities      | None                              |
| Parking Spaces | 4                                 |
| Parking        | Double Garage Attached, Insulated |
| # of Garages   | 2                                 |

### Interior

|                   |                                                                                                                                                                                                          |
|-------------------|----------------------------------------------------------------------------------------------------------------------------------------------------------------------------------------------------------|
| Interior Features | Central Vacuum, Closet Organizers, Double Vanity, Granite Counters, High Ceilings, No Animal Home, No Smoking Home, Open Floorplan, Skylight(s), Storage, Vaulted Ceiling(s), Walk-In Closet(s), Wet Bar |
| Appliances        | Dishwasher, Dryer, Electric Stove, Garage Control(s), Microwave Hood Fan, Refrigerator, Washer, Window Coverings                                                                                         |
| Heating           | Forced Air, Natural Gas                                                                                                                                                                                  |
| Cooling           | Central Air                                                                                                                                                                                              |
| Fireplace         | Yes                                                                                                                                                                                                      |
| # of Fireplaces   | 1                                                                                                                                                                                                        |
| Fireplaces        | Living Room, Wood Burning                                                                                                                                                                                |
| Has Basement      | Yes                                                                                                                                                                                                      |
| Basement          | Finished, Full, Walk-Out                                                                                                                                                                                 |

### Exterior

|                   |                                                                                                                             |
|-------------------|-----------------------------------------------------------------------------------------------------------------------------|
| Exterior Features | BBQ gas line, Rain Gutters                                                                                                  |
| Lot Description   | Front Yard, Landscaped, Low Maintenance Landscape, Many Trees, No Neighbours Behind, Pie Shaped Lot, Underground Sprinklers |
| Roof              | Asphalt Shingle                                                                                                             |
| Construction      | Concrete, Stucco, Wood Frame                                                                                                |
| Foundation        | Poured Concrete                                                                                                             |

### **Additional Information**

|                |                 |
|----------------|-----------------|
| Date Listed    | June 13th, 2025 |
| Days on Market | 10              |
| Zoning         | M-CG d17        |

### **Listing Details**

|                |                           |
|----------------|---------------------------|
| Listing Office | RE/MAX Landan Real Estate |
|----------------|---------------------------|

Data is supplied by Pillar 9â„¢ MLS® System. Pillar 9â„¢ is the owner of the copyright in its MLS® System. Data is deemed reliable but is not guaranteed accurate by Pillar 9â„¢. The trademarks MLS®, Multiple Listing Service® and the associated logos are owned by The Canadian Real Estate Association (CREA) and identify the quality of services provided by real estate professionals who are members of CREA. Used under license.