

\$1,550,000 - 6503 Lombardy Crescent Sw, Calgary

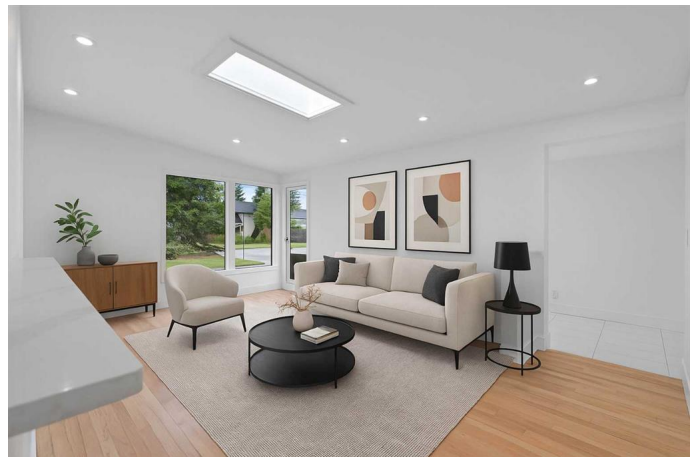
MLS® #A2223210

\$1,550,000

3 Bedroom, 3.00 Bathroom, 1,353 sqft
Residential on 0.15 Acres

North Glenmore Park, Calgary, Alberta

OPEN HOUSE FRI, SAT & SUN May 23-25 This is a rare treasure, located in the desired south pocket of North Glenmore Park community. Situated on a quiet, tree lined street and conveniently located near Earl Grey Golf course, Calgary Girls school, Glenmore Park pathways, Shopping and is just a block away and easy access to Downtown and the Ring Road. This Extra wide lot has a front drive and Oversized and Heated double attached garage, with new garage door, extra windows and Epoxy floors. This bungalow is a Sprawling 1350 sq ft, plus fully developed basement. Classic brick faced exterior with new stucco; this home has been fully transformed and renovated, inside and out, including NEW HE Furnace, TWO Hot Water Tanks and a 200 AMP Electricity Panel. As you enter the home, you will find an upgraded Foyer with 24x24 inch tiled flooring, leading into the living room with vaulted ceilings, sky light, allowing for tons of natural light with large windows. The main floor offers Real site-finished Oak Hardwood flooring throughout. The New kitchen has white quartz counters, high end appliances including a 6-burner gas range, high CFM hood fan, 4-door fridge, Bosch stainless dishwasher and deep sink with pull out faucet. This home also has THREE New Custom Bathrooms including, a 4-piece Main bath, 3-piece Ensuite and Full bath in the basement with Tiled flooring & walls, granite counters and Custom toilets with self-closing, heated seats. The



bedroom wing includes 3 bedrooms up, plus a 4th in the basement. This home is set up for the growing active family and is equipped for the in-laws or nanny, featuring laundry facilities on both floors, a Full Kitchen in the basement, with high end appliances, open concept living room, new large egress windows in living and bedroom and a Cedar Lined Sauna to relax in. Come check out this executive home today!

Built in 1960

Essential Information

MLS® #	A2223210
Price	\$1,550,000
Bedrooms	3
Bathrooms	3.00
Full Baths	3
Square Footage	1,353
Acres	0.15
Year Built	1960
Type	Residential
Sub-Type	Detached
Style	Bungalow
Status	Active

Community Information

Address	6503 Lombardy Crescent Sw
Subdivision	North Glenmore Park
City	Calgary
County	Calgary
Province	Alberta
Postal Code	T3E5R3

Amenities

Utilities	Cable Available, Electricity Connected, Natural Gas Connected, Garbage Collection, Sewer Connected, Water Connected, Phone Available
Parking Spaces	2
Parking	Aggregate, Double Garage Attached, Front Drive, Garage Door Opener,

	Garage Faces Front, Heated Garage, Insulated, Oversized
# of Garages	2

Interior

Interior Features	Closet Organizers, Granite Counters, High Ceilings, Quartz Counters, Sauna, Separate Entrance, Vaulted Ceiling(s), Vinyl Windows
Appliances	Dishwasher, Dryer, Microwave Hood Fan, Refrigerator, Stove(s), Washer, Window Coverings
Heating	High Efficiency, Forced Air, Natural Gas
Cooling	None
Has Basement	Yes
Basement	Finished, Full

Exterior

Exterior Features	Fire Pit, Private Entrance, Private Yard
Lot Description	Back Yard, City Lot, Few Trees, Lawn
Roof	Asphalt Shingle
Construction	Brick, Wood Frame
Foundation	Poured Concrete

Additional Information

Date Listed	May 22nd, 2025
Days on Market	2
Zoning	R-CG

Listing Details

Listing Office	RE/MAX House of Real Estate
----------------	-----------------------------

Data is supplied by Pillar 9â„¢ MLSÂ® System. Pillar 9â„¢ is the owner of the copyright in its MLSÂ® System. Data is deemed reliable but is not guaranteed accurate by Pillar 9â„¢. The trademarks MLSÂ®, Multiple Listing ServiceÂ® and the associated logos are owned by The Canadian Real Estate Association (CREA) and identify the quality of services provided by real estate professionals who are members of CREA. Used under license.