

# \$689,900 - 30 Southborough Crescent, Cochrane

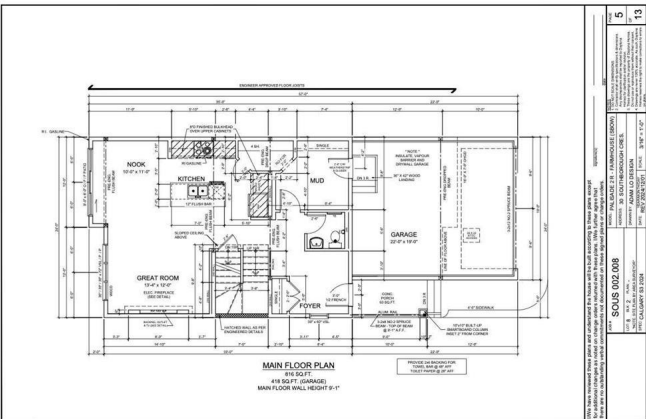
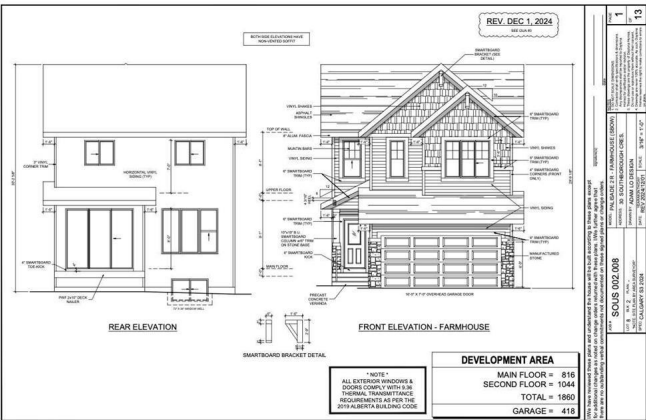
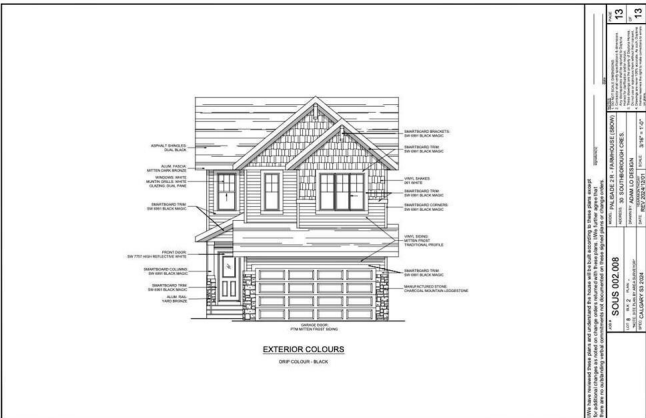
MLS® #A2217601

**\$689,900**

3 Bedroom, 3.00 Bathroom, 1,860 sqft  
Residential on 0.08 Acres

Southbow Landing, Cochrane, Alberta

Welcome to 30 Southborough Crescent in Cochrane, a beautifully crafted home offering over 1,800 square feet of stylish and functional living space. Built by Daytona Homes, this property features a modern layout, thoughtful design, and all the comforts that make it perfect for families, professionals, or anyone looking for a well-balanced place to call home. Step inside through the front foyer and youâ€™ll immediately notice the open flow and smart use of space. A two piece bathroom is conveniently located near the entry, along with a mudroom that connects directly to the double attached garage, keeping the home tidy and organized. Toward the back of the main floor, a spacious kitchen with a large island and flush eating bar becomes the heart of the home. Overlooking both the great room and the eating nook, this space is perfect for everyday living and effortless entertaining. The great room is warmed by an electric fireplace, and the dining nook features patio doors that open to your outdoor living area. Upstairs, the layout continues to impress. Two well-sized bedrooms are positioned at the rear of the home, sharing a four piece bathroom nearby. A dedicated laundry room adds convenience to your daily routine, while a central bonus room separates the primary suite from the secondary bedrooms, offering both privacy and flexibility. At the front of the home, the primary bedroom serves as a true retreat, complete with a generous walk-in closet and a five piece ensuite featuring dual



sinks, a standing shower, and a large soaker tub.

Located in one of Cochrane’s most exciting new communities, 30 Southborough Crescent delivers quality craftsmanship, a functional layout, and room to grow. With Daytona Homes’ reputation for thoughtful design and lasting value, this home offers the perfect blend of comfort and future potential. Book your private tour today and experience what makes this property such a standout.

Built in 2025

**Essential Information**

MLS® #	A2217601
Price	\$689,900
Bedrooms	3
Bathrooms	3.00
Full Baths	2
Half Baths	1
Square Footage	1,860
Acres	0.08
Year Built	2025
Type	Residential
Sub-Type	Detached
Style	2 Storey
Status	Active

**Community Information**

Address	30 Southborough Crescent
Subdivision	Southbow Landing
City	Cochrane
County	Rocky View County
Province	Alberta
Postal Code	T4C 3J9

**Amenities**

Parking Spaces	4
Parking	Double Garage Attached

# of Garages 2

### Interior

Interior Features Bathroom Rough-in, Built-in Features, Double Vanity, Kitchen Island, Open Floorplan, Walk-In Closet(s)

Appliances Dishwasher, Electric Stove, Garage Control(s), Microwave, Refrigerator

Heating Forced Air

Cooling None

Fireplace Yes

# of Fireplaces 1

Fireplaces Electric

Has Basement Yes

Basement Full, Unfinished

### Exterior

Exterior Features None

Lot Description Back Yard, City Lot, Rectangular Lot

Roof Asphalt Shingle

Construction Vinyl Siding, Wood Frame

Foundation Poured Concrete

### Additional Information

Date Listed May 4th, 2025

Days on Market 7

Zoning R-MX

### Listing Details

Listing Office Royal LePage Benchmark

Data is supplied by Pillar 9â„¢ MLSÂ® System. Pillar 9â„¢ is the owner of the copyright in its MLSÂ® System. Data is deemed reliable but is not guaranteed accurate by Pillar 9â„¢. The trademarks MLSÂ®, Multiple Listing ServiceÂ® and the associated logos are owned by The Canadian Real Estate Association (CREA) and identify the quality of services provided by real estate professionals who are members of CREA. Used under license.